


Parental Controls

Instructions

Parental Controls allows you to block certain programs based on TV and movie ratings. To change your settings, press the **MENU** button on your remote and select **Parental Controls**. You will need to set up a 4-digit Locks Pin the first time you enter the Parental Controls screen. When Parental Controls are enabled, programs that violate the parental controls display a lock  icon in the information screen and require the Locks PIN to watch the program. For more information on Parental Controls options, view our support page online at www.rsfiber.coop/support or contact RS Fiber Video and Phone Technical Support at **(800) 628-1754**.

Disabling Parental Controls

You can set up parental controls to block certain TV shows, movies, and VOD rentals based on their ratings and content.

To Temporarily Disable Parental Controls

1. Press the **MENU** button on the remote and select **Settings** from the main menu.
2. Enter your password and press **OK**. (Default password is **1234**.)
3. In the **Preferences** screen (Fig. 1), use the arrow keys on the remote to select the check box for **Parental Control** and press the **OK** button on the remote to enable/disable.
4. Select the **Edit** option next to **Parental Control** to edit the settings.
5. Change the settings as needed and select the **Submit** option to save your changes.

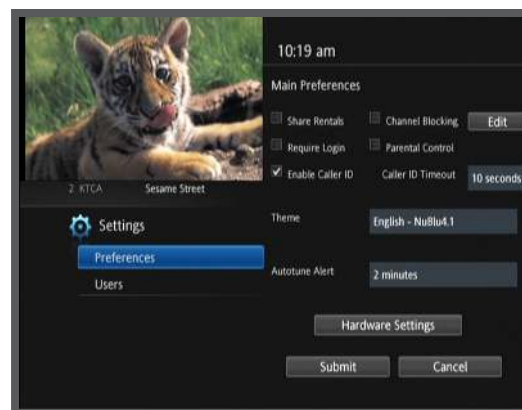


Fig. 1

Disabling Parental Controls

To Temporarily Disable Parental Controls

1. Press the **MENU** button on the remote and select **Control On** in the main menu.
2. Enter your password when asked. (This will disable settings for 30 minutes.)

To Manually Re-enable Parental Controls

1. Press the **MENU** button on the remote and select **Parental Controls**.

Enable A PIN Number

1. Press the **MENU** button on your remote and select **Settings** from the main menu.
2. Enter your password and press **OK**. (Default password is **1234**.)
3. Select the **Users** option (Fig 2.); then, select **Edit** at the bottom of the screen.
4. Enter your current PIN in the **PIN box**. (Default password is **1234**.)
5. Enter your new PIN number in the **New PIN** and **Confirm PIN** boxes. (PIN numbers can be up to 8 digits.)
6. Select the check box for **Enable PIN** to require a PIN for all VOD rentals.
7. Select **Submit** to save your changes.

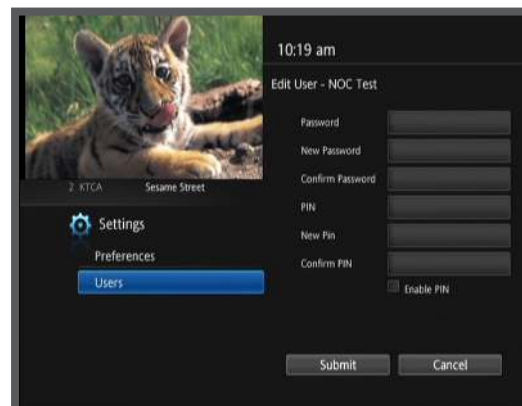


Fig. 2

Parental Control Options

Movie Rating

This will block all movies rated at a particular level or higher.

TV Rating

This will block all TV programs rated at a particular level or higher.

Unlock Timeout

This will determine how long Parental Controls are temporarily disabled after the password is entered.

Block Unrated

This option will block all unrated movies and TV programs.

Content Rating

Select the TV content rating you want to be blocked. (Fig. 3)

- **S - Sexual Situations**
- **L - Language**
- **D - Suggestive Dialogue**
- **V - Violence**
- **F - Fantasy Violence**

- Visit www.tvguidelines.org for more information about TV and content ratings and www.mpaa.org/ratings for more information about film ratings.



Fig. 3